

Chair of Architectural Behaviorology

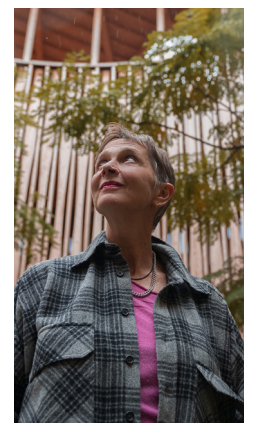


University Children's Hospital Zurich designed by Herzog & de Meuron, Photography © Katalin Deér

How to KISPI

Herzog & de Meuron has been committed to healthcare work since the REHAB Clinic for Neurorehabilitation and Paraplegiology project began in 1998. Their latest completed healthcare project, the University Children's Hospital Zurich – the Kinderspital Zürich or 'KISPI' – opened in October 2024. Senior Partner Christine Binswanger, who led both hospital projects, will present Kinderspital Zürich from the perspective of 'the care of architecture'.

Christine Binswanger, Senior Partner at Herzog & de Meuron since 2009, joined the firm in 1991 and became Partner in 1994. She has wide-ranging experience in different typologies including urban planning and transformations, museums and art spaces, educational and research facilities, housing, corporate offices and hospitals. Besides REHAB Basel and Children's Hospital Zurich, notable projects include the Pérez Art Museum, 1111 Lincoln Road in Miami, Lyon Confluence and Lombard Odier's Geneva headquarters. She received the Prix Meret Oppenheim in 2004, awarded by the Swiss Federal Art Commission. Christine studied architecture at ETH Zurich.



© Micha Bardy

Guest: Christine Binswanger, Senior Partner at Herzog & de Meuron
 Hosts: Chair of Architectural Behaviorology, Momoyo Kaijima
 Chair of Architecture and Care, Anna Puigjaner
 Chair of Architecture Heritage and Sustainability, Mariam Issoufou

Date: 26th of March 2025
 Time: 18:00-20:00
 Location: Höggerberg HIL E1